

**ST. PAUL'S EPISCOPAL CHURCH**  
**"To Know Christ and to Make Him Known"**  
**FINANCIAL HIGHLIGHTS**  
**AUGUST 2010**

**NET INCOME**

<i>Monthly Net Income - August:</i>	\$1,365
<i>Budgeted Monthly Net Income:</i>	\$0
<i>Year-to-Date Net Income:</i>	\$8,166
<i>Budgeted Year-to-Date Net Income:</i>	\$0

**CASH FLOW**

*Operating Fund - Checking Account:*

Beginning Balance 08/01/10	\$206,789
Ending Balance 08/31/10	\$125,706

**REVENUE**

*Overall Revenue:*

Monthly & year-to-date revenue:

- Monthly revenues of \$51,208 are **\$4,170 below budgeted revenue** of \$55,379.
- Year-to-date revenues of \$416,401 are **\$26,628 below budgeted revenue** of \$459,816.

*Pledge and Contribution Revenue:*

Monthly & year-to-date revenue:

- Monthly revenues of \$38,637 are **\$5,004 below budgeted revenue** of \$43,641.
- Year-to-date revenues of \$319,067 are **\$30,058 below budgeted revenue** of \$349,125.

*Endowment Revenue:*

- August receipts from Mellon are \$10,174 and agree to budget.

## EXPENSES

### Overall Expenses:

Monthly & year-to-date expenses:

- Monthly expenses of \$49,843 are \$5,536 below budgeted expenses of \$55,379.
- Year-to-date expenses of \$408,235 are \$34,794 below budgeted expenses of \$443,029.

### Parish Outreach:

#### DPA Payment for Current Month

Pledges/Contributions/Plate	\$38,637
Investment Revenue	<u>10,174</u>
Total	<u>\$48,811</u>
DPA - 20%	\$9,762
Less 20% DPA credit on Qualified Non-Operating Expenses	<u>-3,206</u>
Total DPA	<u>\$6,556</u>

Year-to-date DPA is \$21,806 below budget.

### Parish Programs:

#### Outreach Commission:

- Year-to-date expenses are \$2,333 below budget.

#### EFM:

- Current month registration expense is \$2,450, reimbursements are \$1,200. Year-to-date expenses **exceed budget by \$825**.

#### Altar Guild:

- Year-to-date expenses are \$1,251 below budget.

#### The Word:

- Year-to-date expenses are \$1,295 below budget.

#### Pastoral Care/Stephens Ministries:

- Year-to-date expenses **exceed budget by \$1,000**. Annual expenses incurred early in year.

#### Christian Formation Program:

- Year-to-date personnel expenses are \$2,888 below budget.

Music Program:

- Year-to-date personnel expenses are \$1,708 below budget.
- Year-to-date program expenses **exceed budget by \$1,093**.

Administrative Expenses:

Financial Secretary/Bookkeeper - Personnel Costs:

- Year-to-date expenses are \$1,568 below budget.

Interim Clergy:

- Year-to-date expenses are \$4,633 below budget.

Utilities:

- Year-to-date expenses **exceed budget \$2,648**. Water/sewer is still high, Kati is checking into this.

Insurance:

- Year-to-date expenses **exceed budget \$2,508**. (February expenses included the annual premiums for liability, general insurance and employee practice liability)

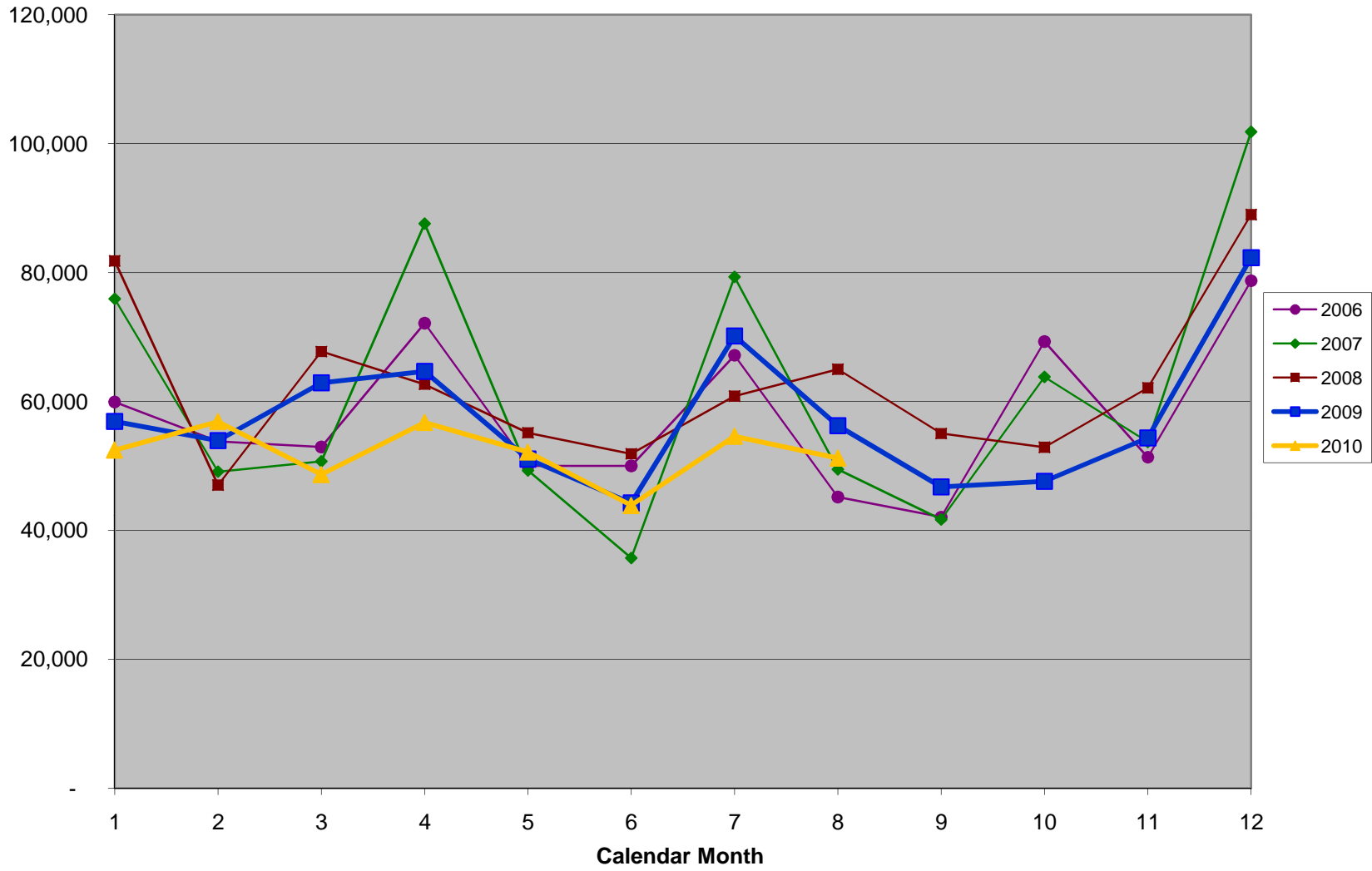
Office Expenses:

- Year-to-date expenses are below budget \$4,844.

Miscellaneous Expense:

- Year-to-date expenses are below budget \$4,835.

St. Paul's Monthly Revenues



St. Paul's Cumulative Net Income (Loss)

